



### Exhibition Programme

June 2009 - June 2010

#### Exhibition Policy

The principal aim of the gallery is to provide a centre for artistic activity in the region through the provision of a varied programme of quality exhibitions and events related to all aspects of the visual arts, for the benefit of the local community and visitors to the area, and to enhance the image of Pendle. The ACE Centre will offer a varied programme of temporary exhibitions. In order to broaden access to the visual arts, we will aim to provide stimulating interpretation for each exhibition

#### Exhibition Programme

8<sup>th</sup> June 2009 - 26<sup>th</sup> June 2009

##### Showcase

The Showcase will be an exhibition for the opening and will show 2 or 3 pieces of work from each artist due to exhibit over the following year.

Called SHOWCACE

29<sup>th</sup> June 2009 - 4<sup>th</sup> July 2009

Nelson and Colne College Final year Show

*A final Year Exhibition by National Diploma and Foundation in Art and Design*

13<sup>th</sup> July 2009 - 21<sup>st</sup> August 2009

##### Shahida Ahmed

*Traditional Islamic Art, using architecture, calligraphy and geometric patterns to fuse a contemporary representation of an authentic art*



##### John Parker

*Watercolour landscapes of the lanes and fields of the countryside we live in and around but never see*



John Parker

7<sup>th</sup> September 2009 - 10<sup>th</sup> October 2009

William Titley

A body of paintings, sculpture, video projections and photography inspired by a recent trip to Pakistan



William Titley: Images of Old Waterside, sealed inside Milk Bottles.

Eric Crimmins

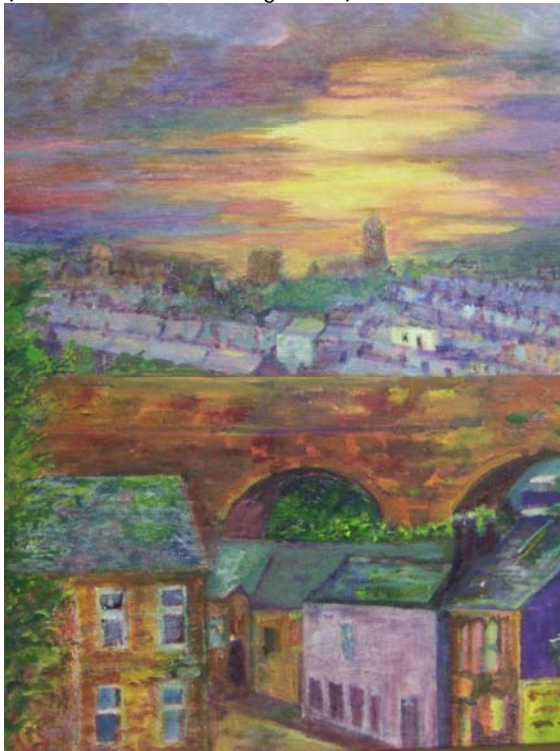
*Photographs mainly consisting of sunsets, lakes and seas*



Eric Crimmins: Stormy Weather

19<sup>th</sup> October 2009 - 24<sup>th</sup> October 2009

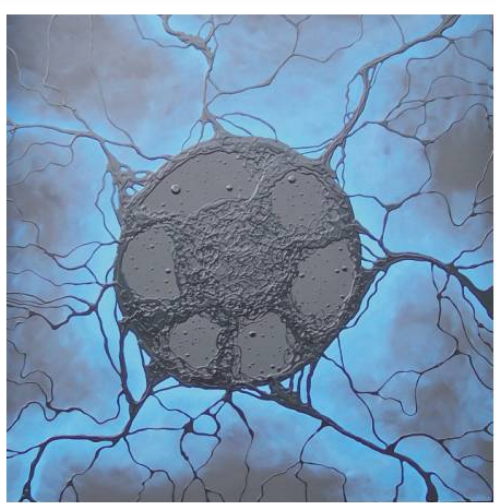
Pendle Open Arts  
(Include Hire of Meeting Room)



2<sup>nd</sup> November - 18<sup>th</sup> December 2009

Michael Kirkbride

*Abstract process painting combining the intent of the artist with the natural action of materials and conditions*



**BLUE-BLACK 2** Acrylic onto canvass  
Size 1.1M X 1.1M

In the centre of the canvass a dark energy reaches out to swallow the surroundings. The starkness of the contrast between the two processes creates a spatial visual experience the gives a feeling of 'presence' to the piece.  
Negative power is embodied in the vein-like lines the radiate from the black centre.

Michael Kirkbride: Blue-Black 2

Jo Rigby

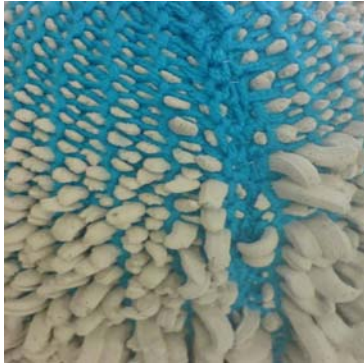
*Work exploring the relationship between the creative processes and its eventual outcome, particularly focussing on 3D work*



Jo Rigby: Flow III

11<sup>th</sup> January 2010 - 23<sup>rd</sup> January 2010

UCLAN Degree Student Show



UCLAN: Example Student Work

*A curated group exhibition showcasing student work from all levels of student, through BA to MA*

1<sup>st</sup> February 2010 - 6<sup>th</sup> March 2010

Pendle Artists  
(Include Hire of Meeting Room)



David C Lyons - a member of Pendle Artists

15<sup>th</sup> March 2010 - 17<sup>th</sup> April 2010

Interchange collective, four artists who are concerned with the exploration of space.

Nicola Ellis  
Chrissie Lee Murray  
Christy Leigh Sherratt  
Andy Greenacre

4<sup>th</sup> May 2010 - 19<sup>th</sup> June 2010

Jane Adams  
*Rich, bright colours, pattern and texture incorporating found objects create visual effects that change with light*



*Jane Adams*

Paula Newton  
*Contemporary Illustration*

